

# Erie County Mental Health Risk Indicator Maps

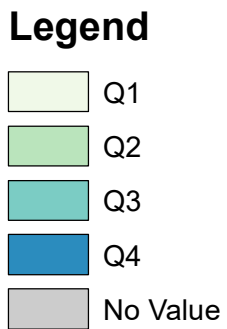
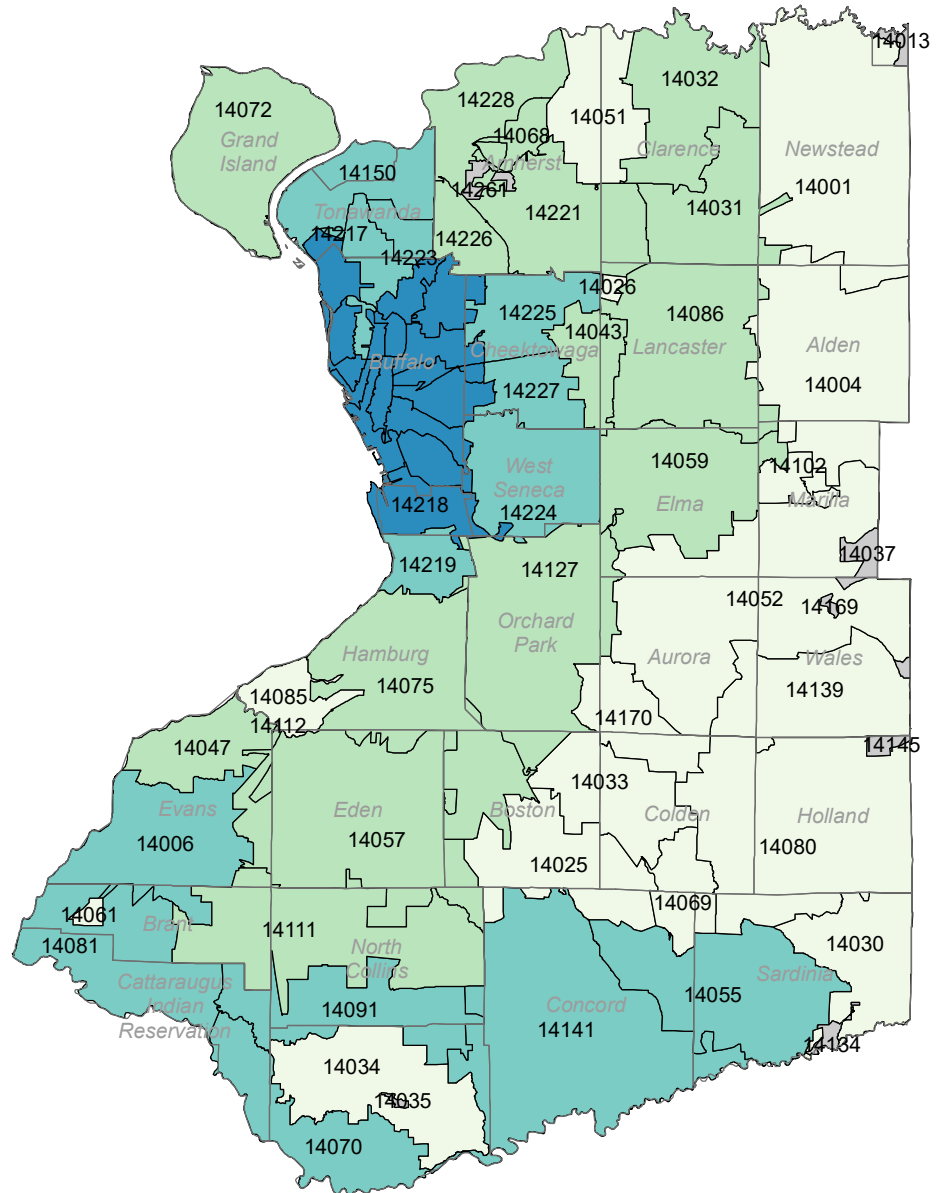
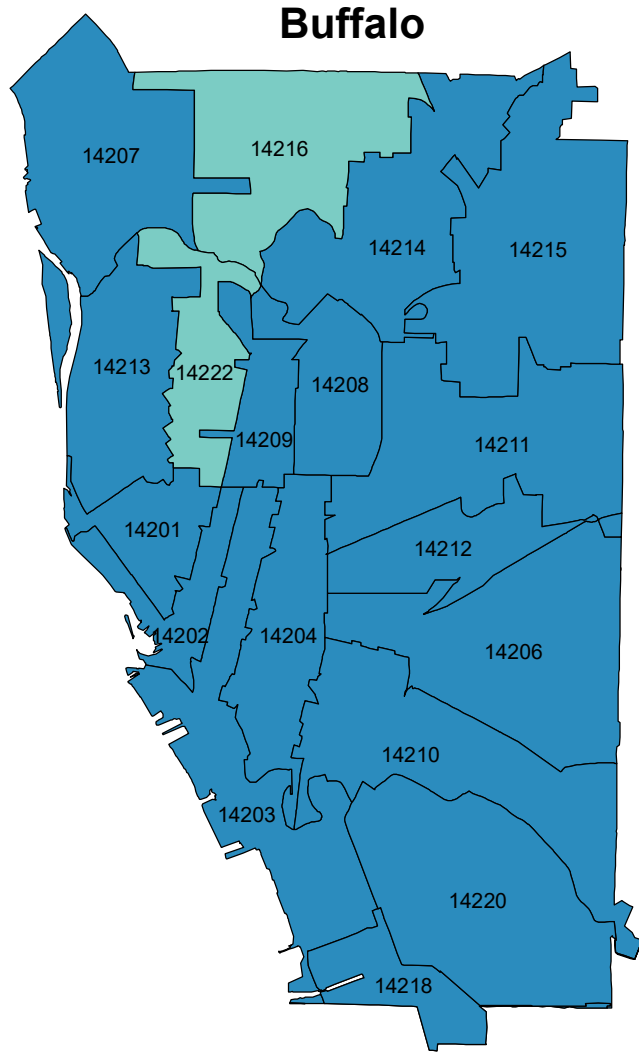
## Erie County Including Buffalo

<b><u>Map</u></b>	<b><u>Page</u></b>
<i>Mental Health Related Hospitalizations (per 10,000 population)</i>	3
<i>Mental Health Related Emergency Room Visits (per 10,000 population)</i>	4
<i>Hospitalizations due to Suicide and Intentional Self-inflicted Injury (per 10,000 population)</i>	5
<i>Emergency Room Visits due to Suicide and Intentional Self-inflicted Injury (per 10,000 population)</i>	6
<i>Pediatric Mental Health Related Hospitalizations (per 10,000 population)</i>	7
<i>Pediatric Mental Health Related Emergency Room Visits (per 10,000 population)</i>	8
<i>Adolescent Hospitalizations due to Suicide and Intentional Self-inflicted Injury (per 10,000 population)</i>	9
<i>Adolescent Emergency Room Visits due to Suicide and Intentional Self-inflicted Injury (per 10,000 population) by ZIP Code</i>	10
<i>Prevention Quality Overall Composite</i>	11
<i>Off-premise Alcohol Outlets (per 10,000 population)</i>	12
<i>Off-premise Alcohol Outlets (per 100 road miles)</i>	13
<i>Cirrhosis Death Rate (per 10,000 population)</i>	14
<i>Crime Index</i>	15
<i>Criminal Mischief Rate (per 10,000 population)</i>	16
<i>Juvenile Violent Crime Arrest Rate (per 10,000 population)</i>	17
<i>Youth Problem Behavior Index</i>	18
<i>Gini Coefficient</i>	19
<i>Composite Poverty Index</i>	20
<i>Percent of Population in Rental Units</i>	21
<i>Percent Moved Within County</i>	22
<i>Percent of Population Currently Employed Full Time [At Least 35 hrs/wk, 50 wks/yr]</i>	23
<i>Percent of Working Age Population Currently Employed [Ages 20-64]</i>	24
<i>Percent of Population with High School Diploma or Equivalent Currently Employed</i>	25
<i>Percent of Disabled Population Currently Employed [Any Disability]</i>	26
<i>Unemployment Rate among Work Age Population [Age 20-64]</i>	27

<i>Unemployment Rate among Population with High School Diploma or Equivalent</i>	28
<i>Unemployment Rate among Disabled Population [Any Disability]</i>	29
<i>OASAS Treatment Program Admissions [Under Age 18] (per 10,000 population)</i>	30
<i>OASAS Treatment Program Admissions [Over Age 18] (per 10,000 population)</i>	31
<i>Percent of Households Receiving Food Stamps</i>	32
<i>Percent of Mothers Breastfeeding at Hospital Discharge</i>	33
<i>Percent of Mothers Smoking During or up to 3 Months Prior to Pregnancy</i>	34
<i>Annual School Attendance Rate</i>	35
<i>Annual School Suspension Rate</i>	36
<i>Percent of High School Students Graduating with Regents Diplomas</i>	37
<i>Percent of Students with Low Grade 8 English (ELA) Performance</i>	38



# Mental Health Related Emergency Room Visits (per 10,000 population) by ZIP Code

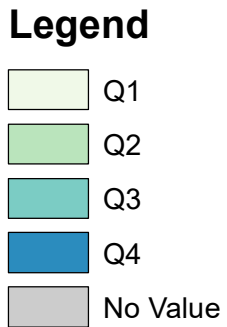
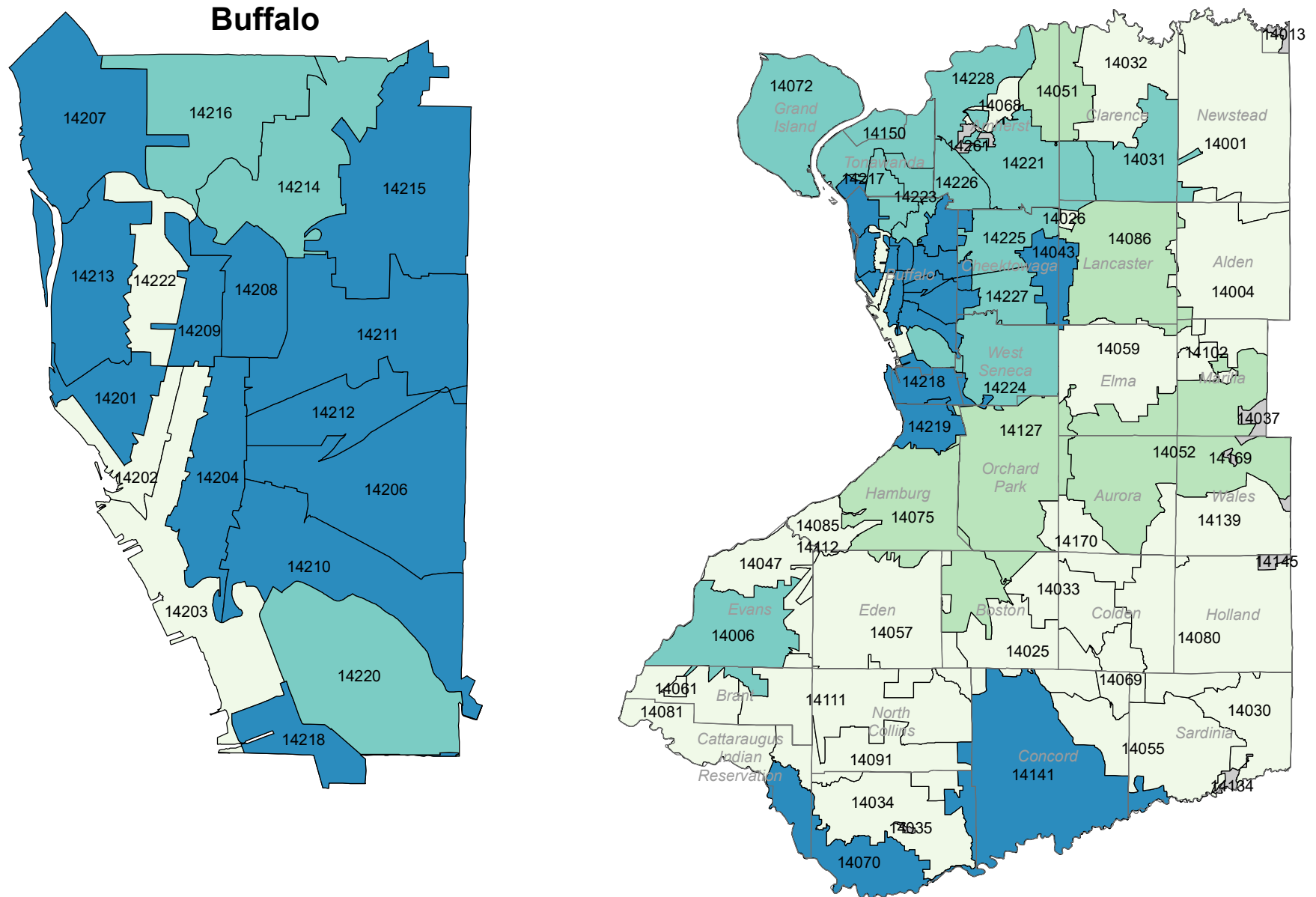








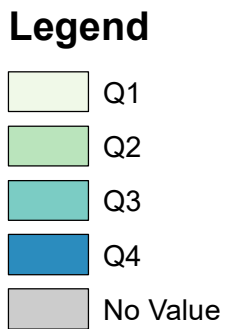
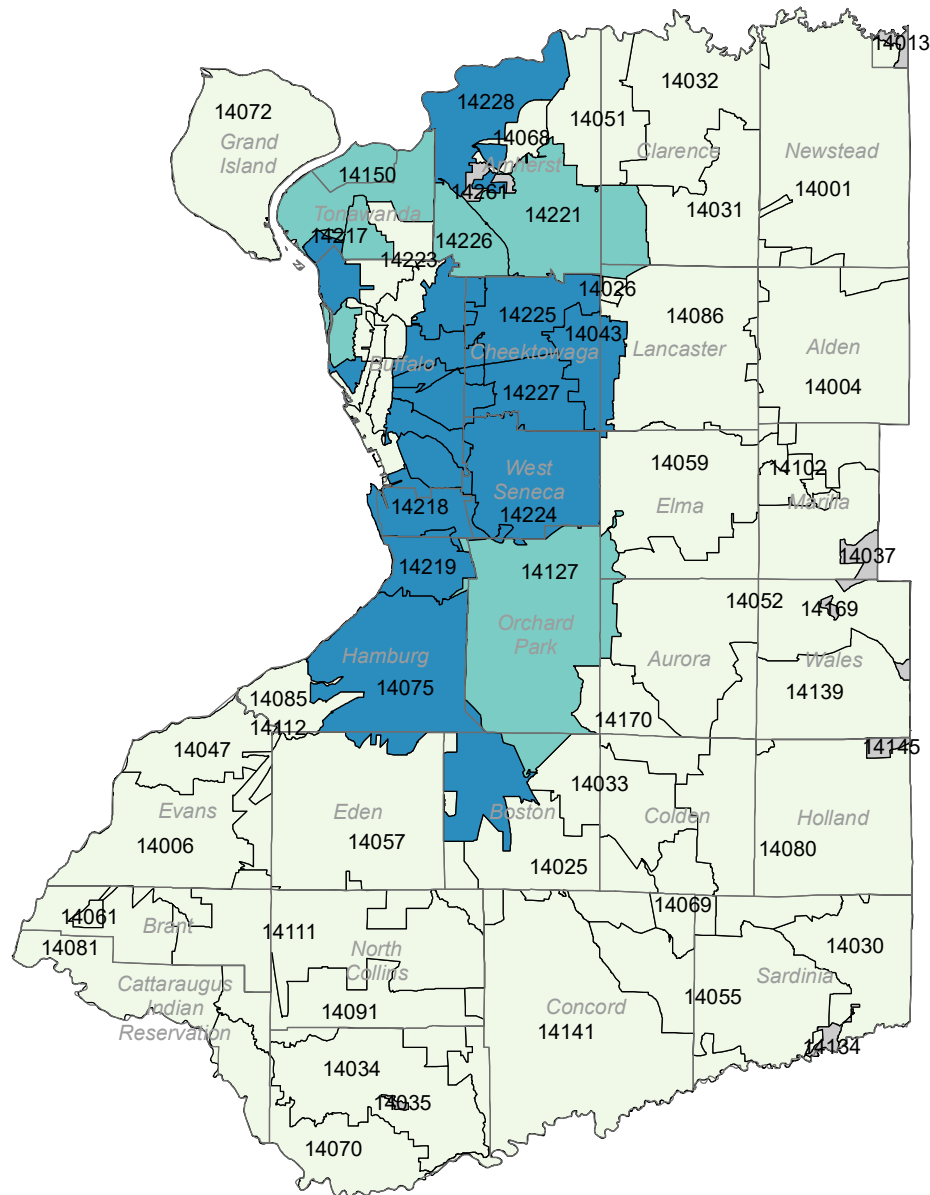
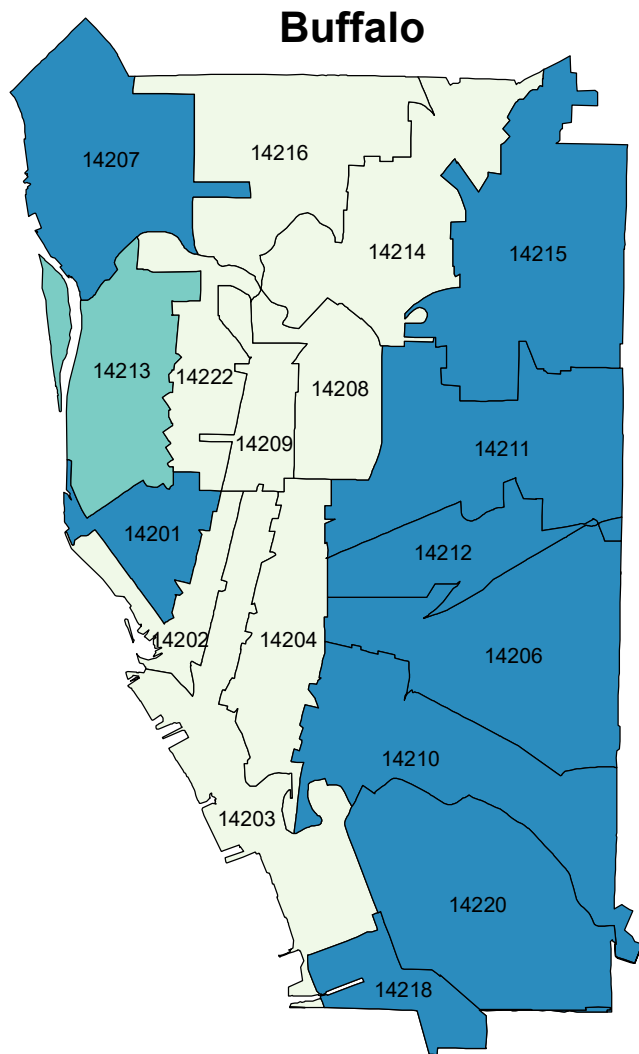
# Pediatric Mental Health Related Emergency Room Visits (per 10,000 population) by ZIP Code







# Adolescent Emergency Room Visits due to Suicide and Intentional Self-inflicted Injury (per 10,000 population) by ZIP Code



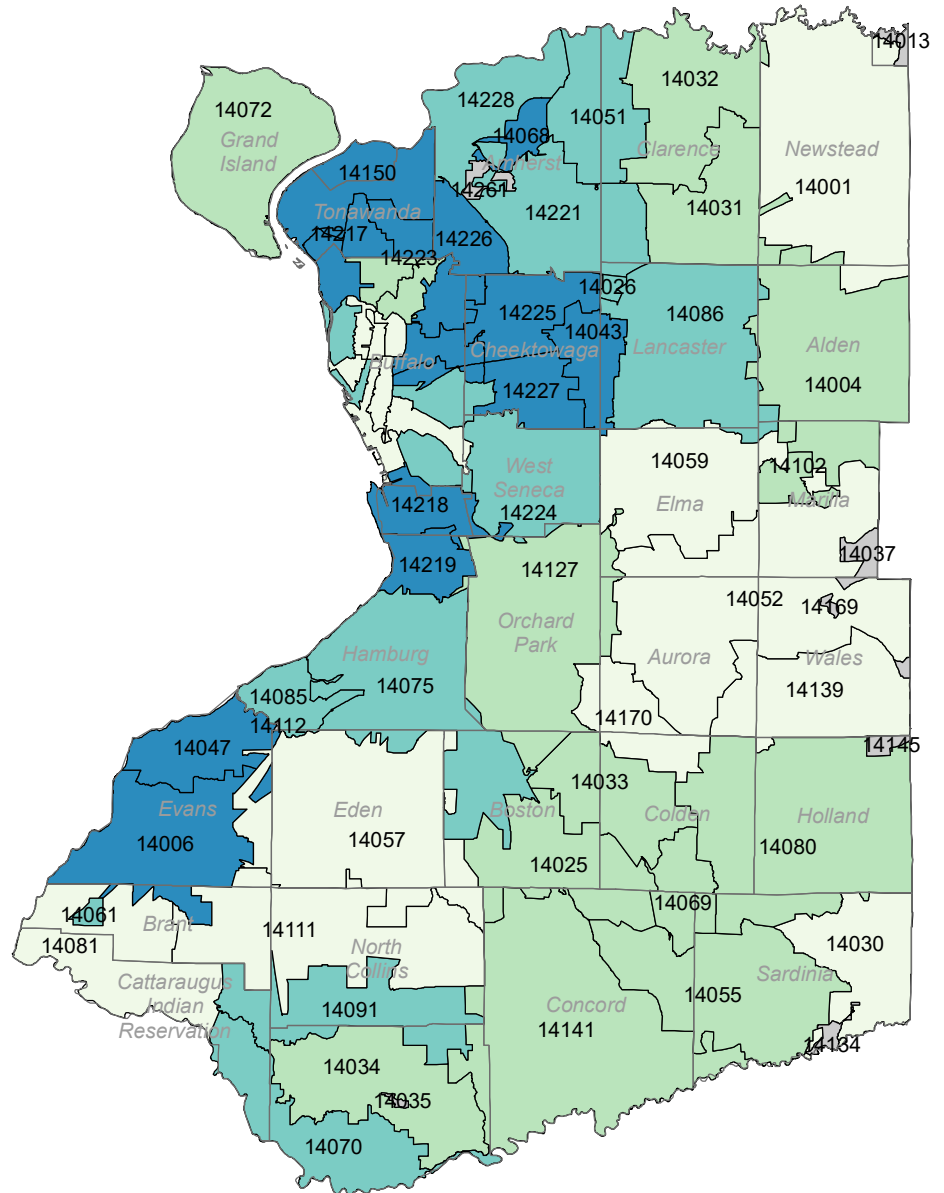
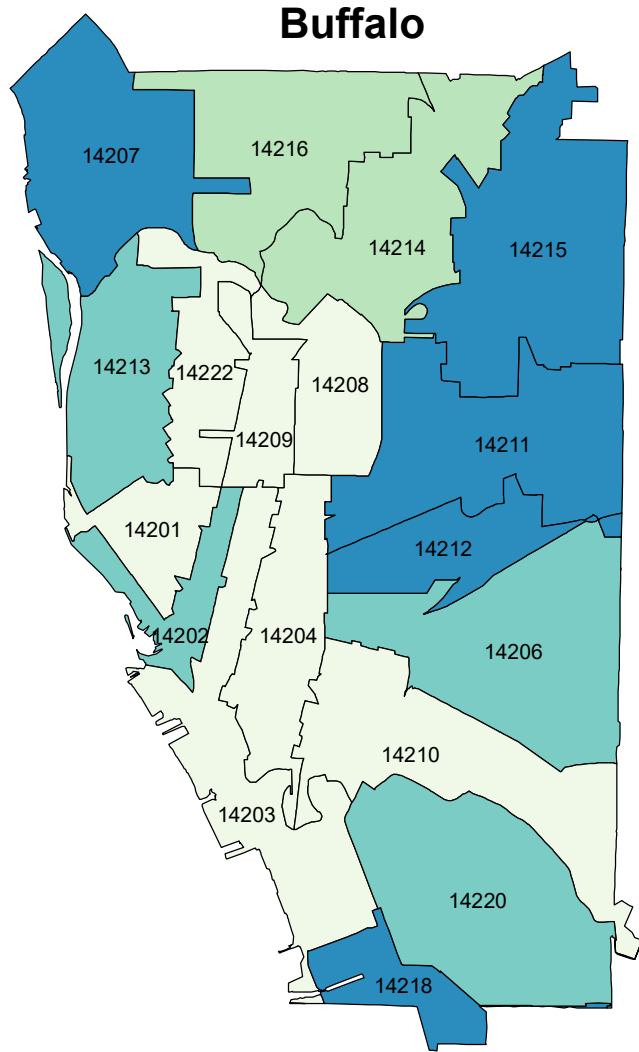








# Crime Index by ZIP Code



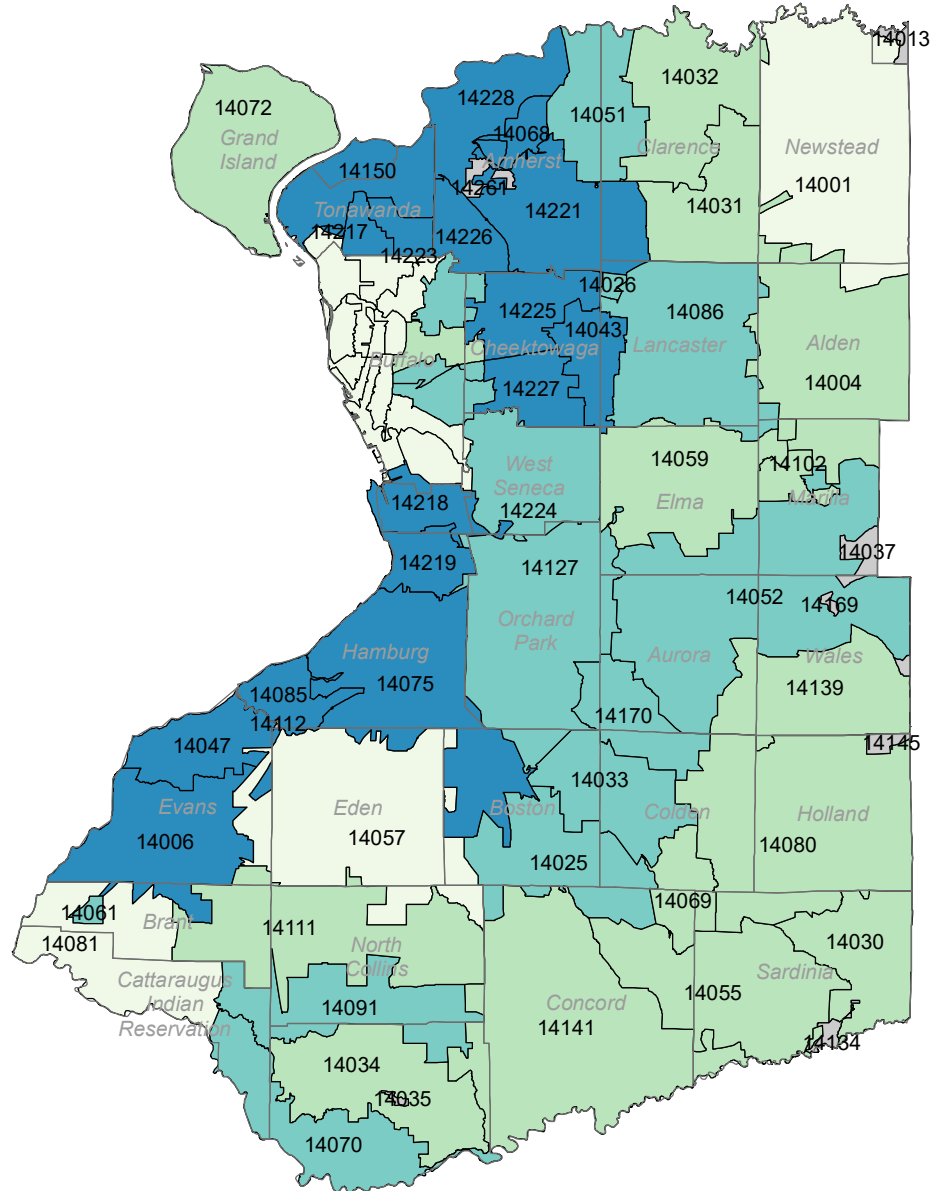
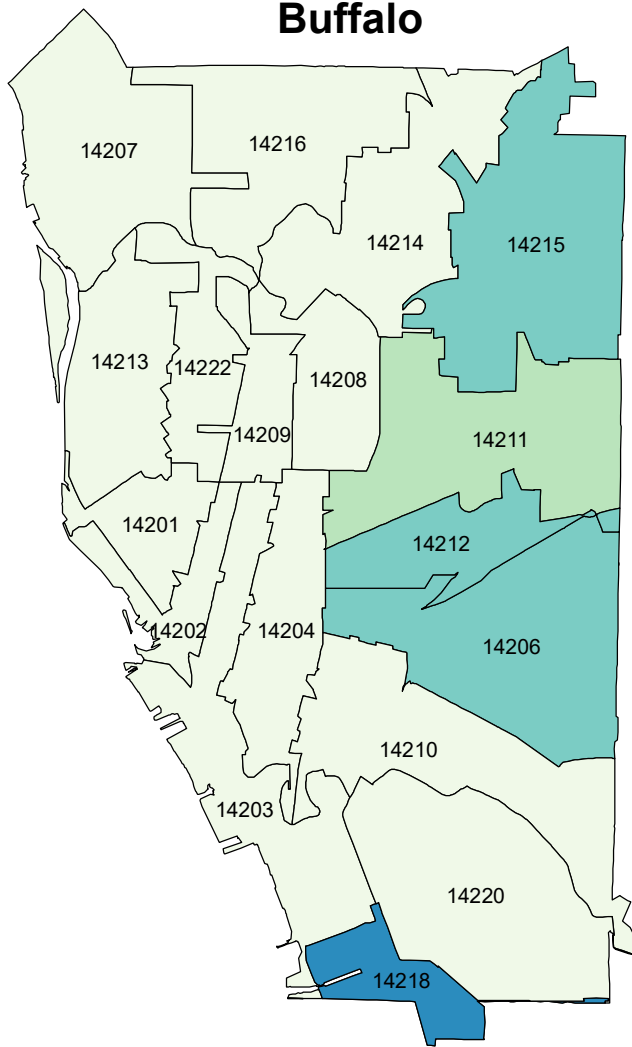
## Legend

- Q1
- Q2
- Q3
- Q4
- No Value



# Criminal Mischief Rate (per 10,000 population) by ZIP Code

## Buffalo



### Legend

- Q1
- Q2
- Q3
- Q4
- No Value

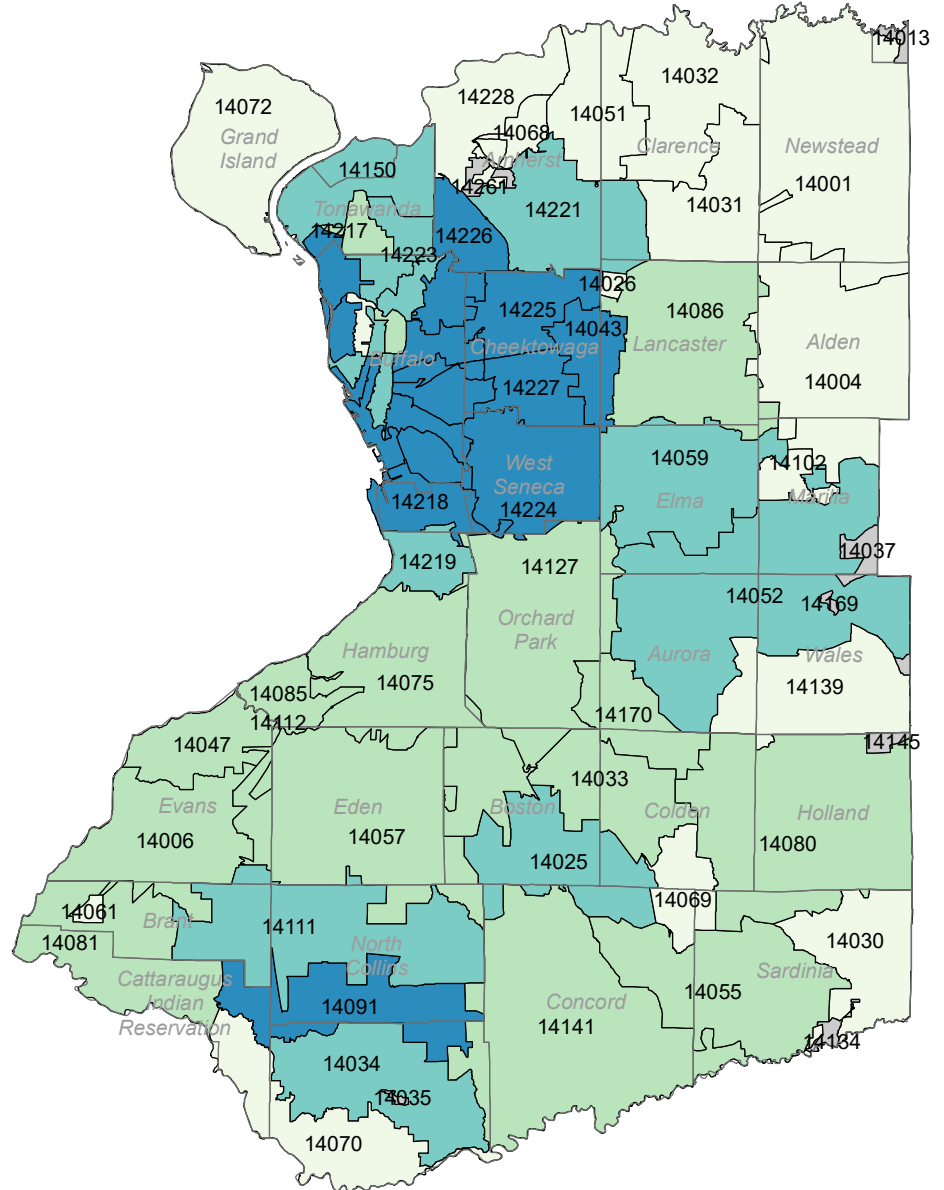
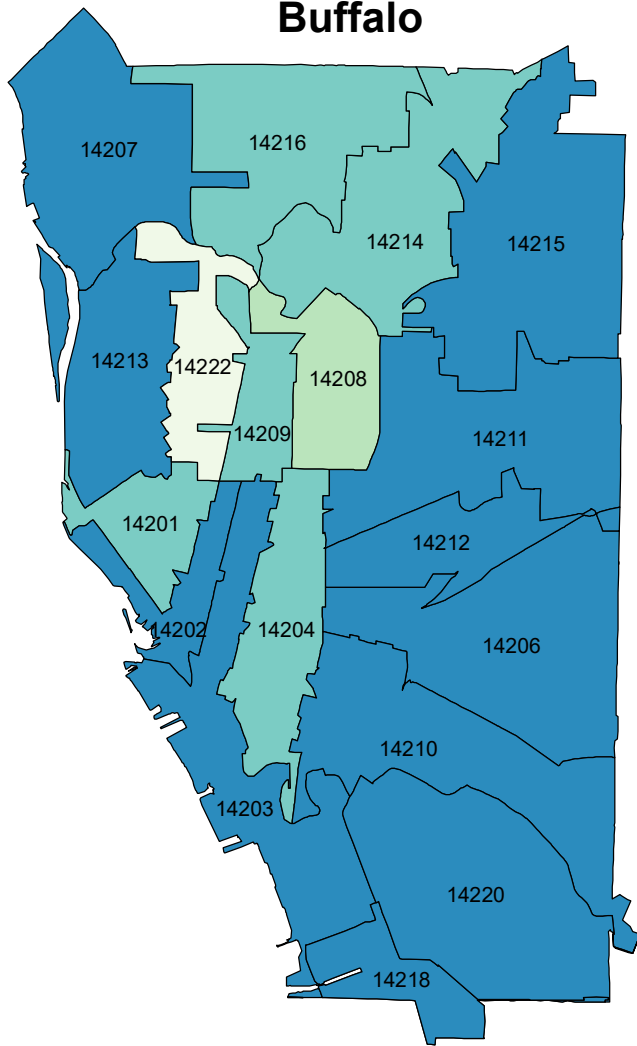






# Youth Problem Behavior Index by ZIP Code

## Buffalo



## Legend

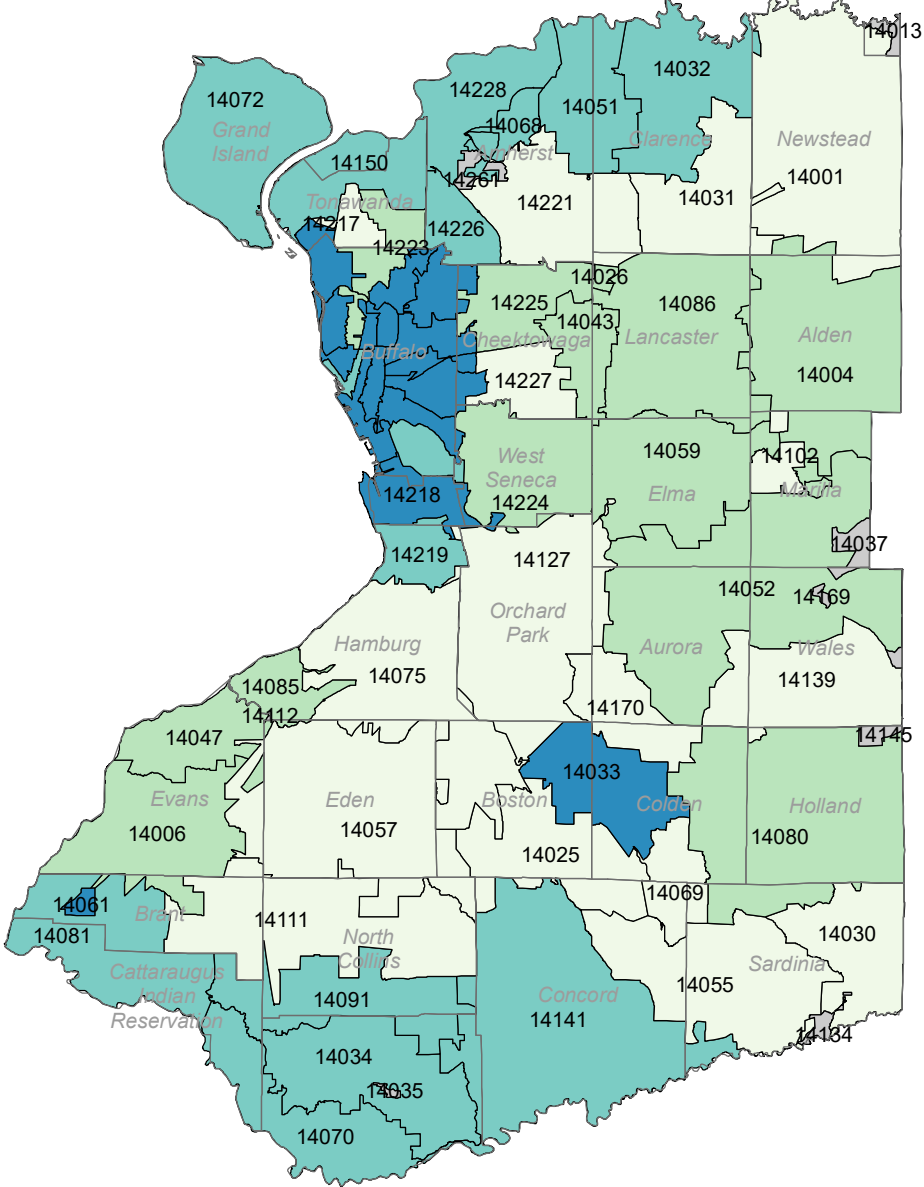
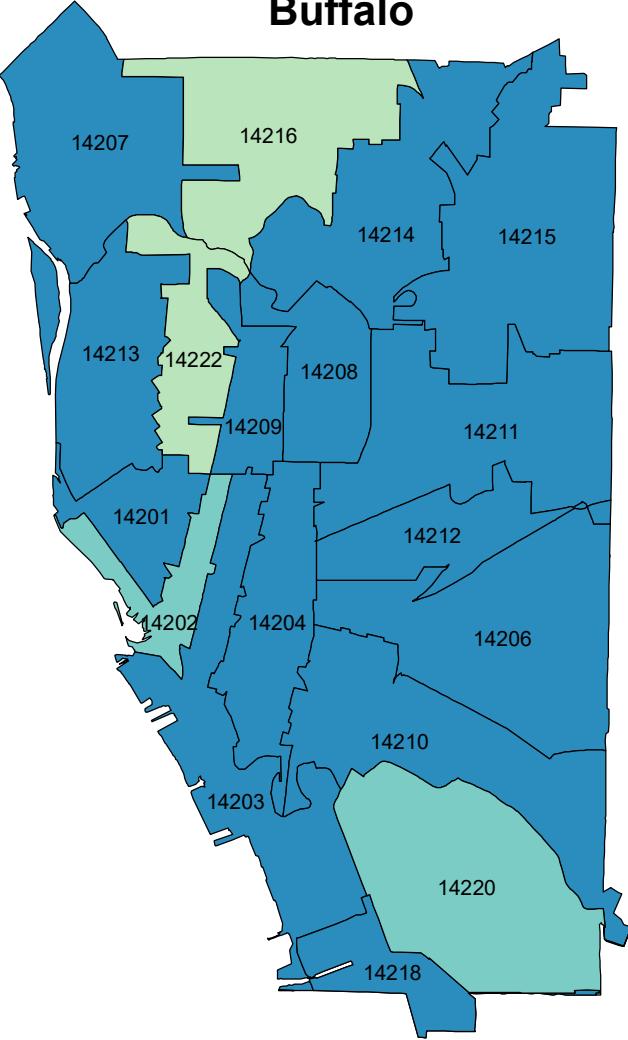
- Q1
- Q2
- Q3
- Q4
- No Value





# Composite Poverty Index by ZIP Code

## Buffalo



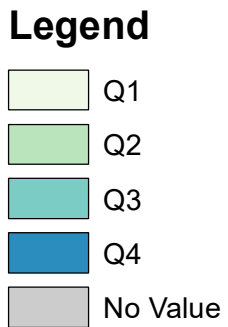
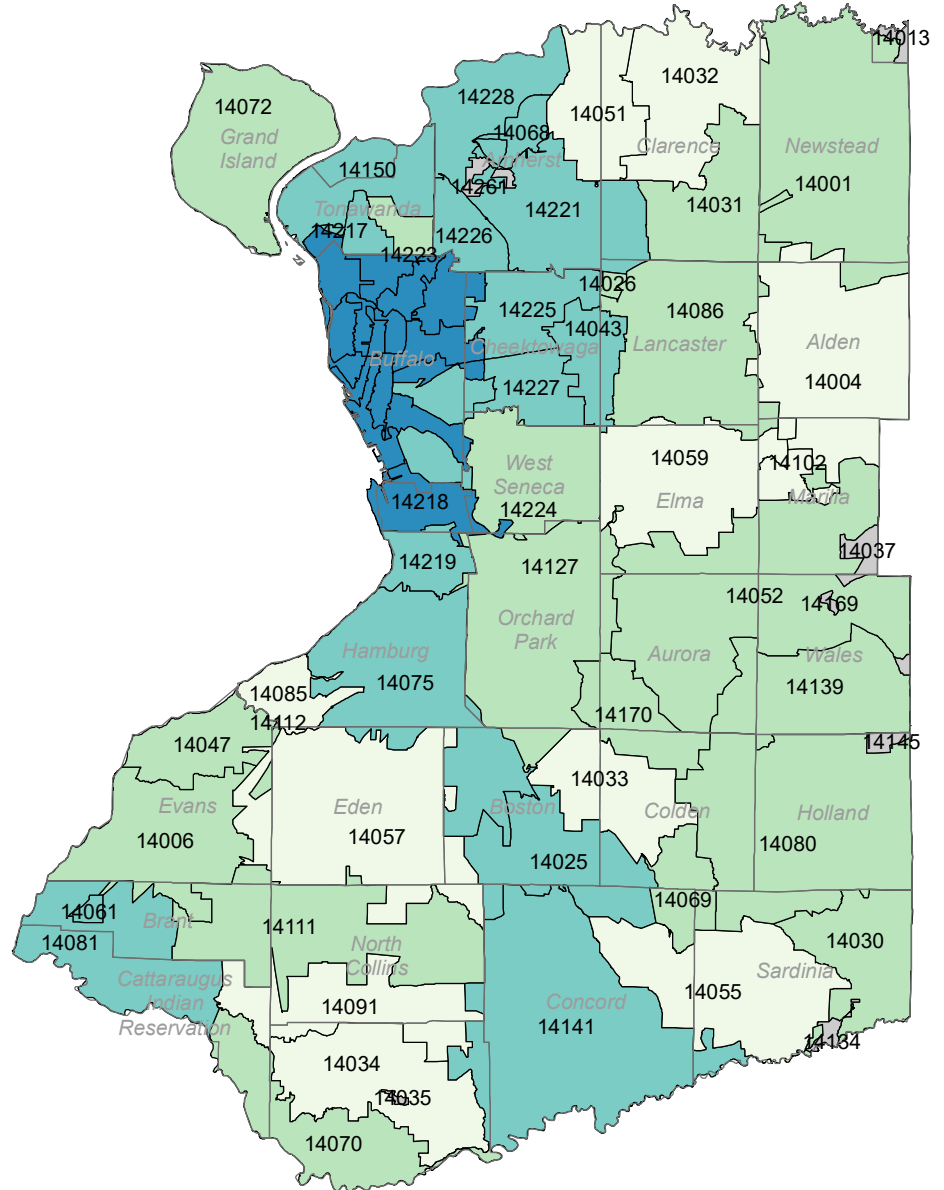
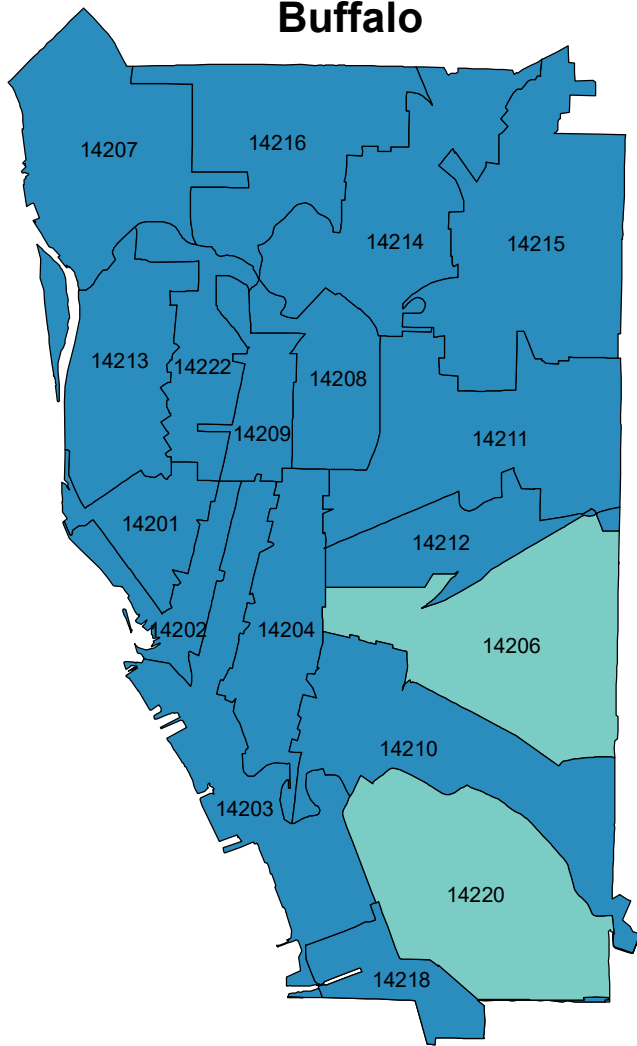
### Legend

- Q1
- Q2
- Q3
- Q4
- No Value



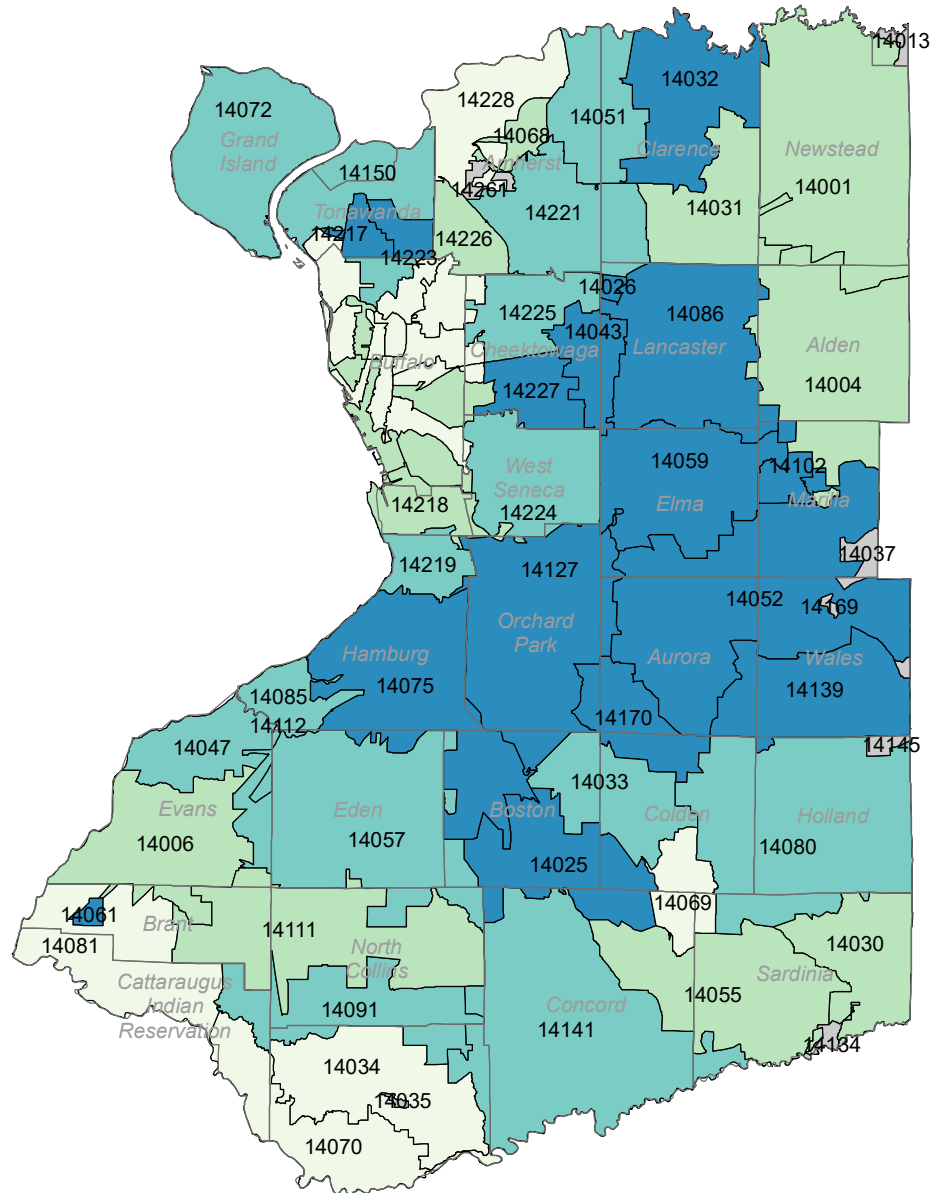
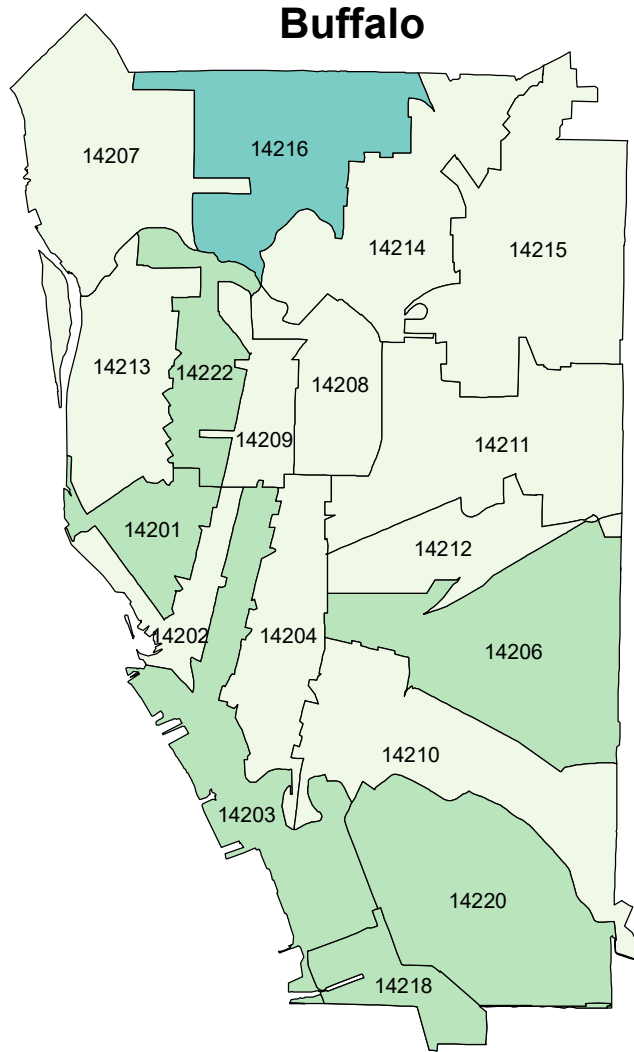
# Percent of Population in Rental Units by ZIP Code

## Buffalo

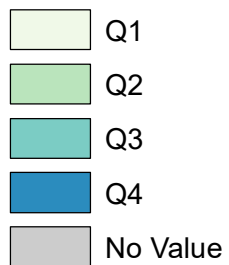




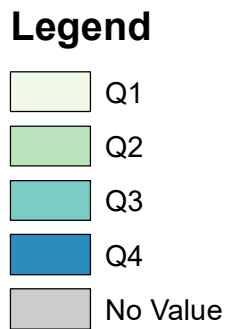
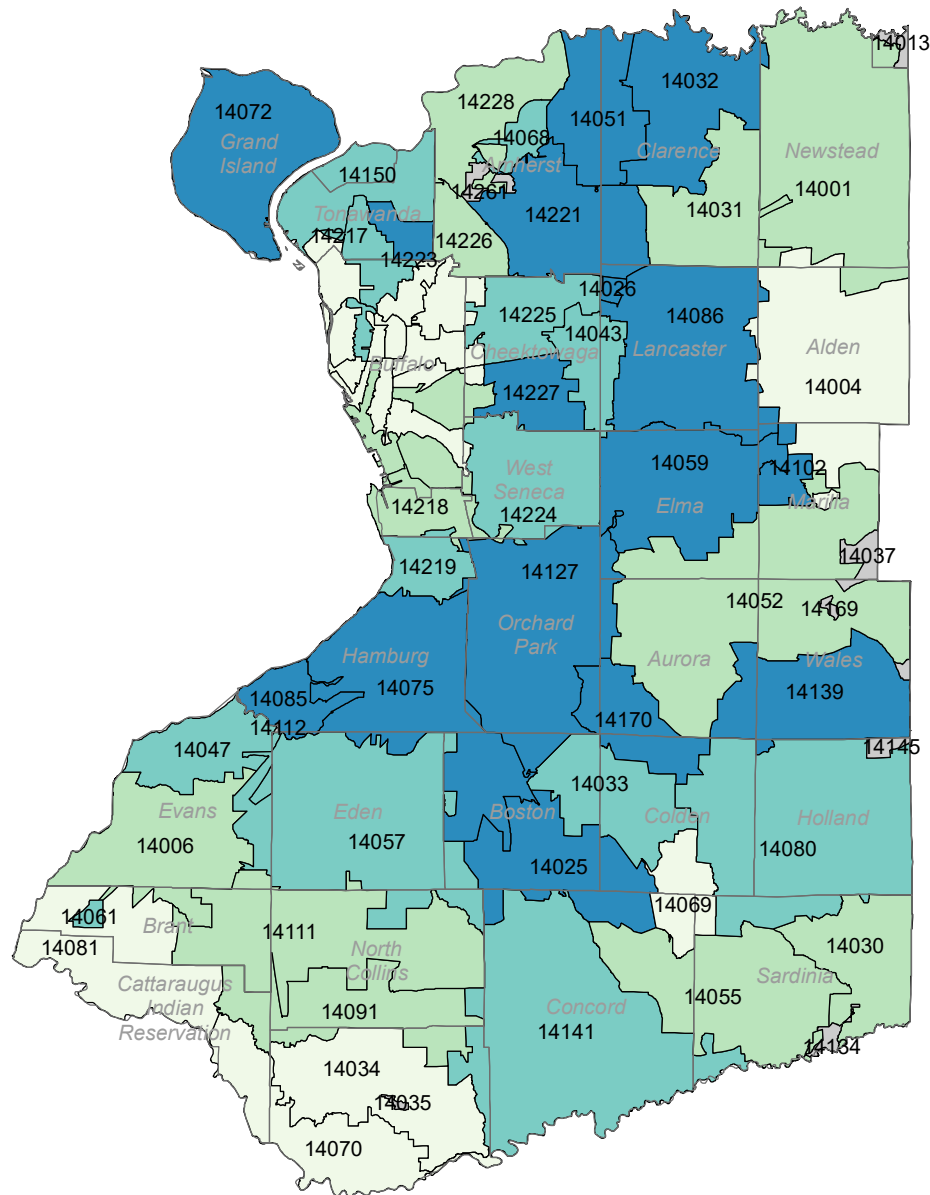
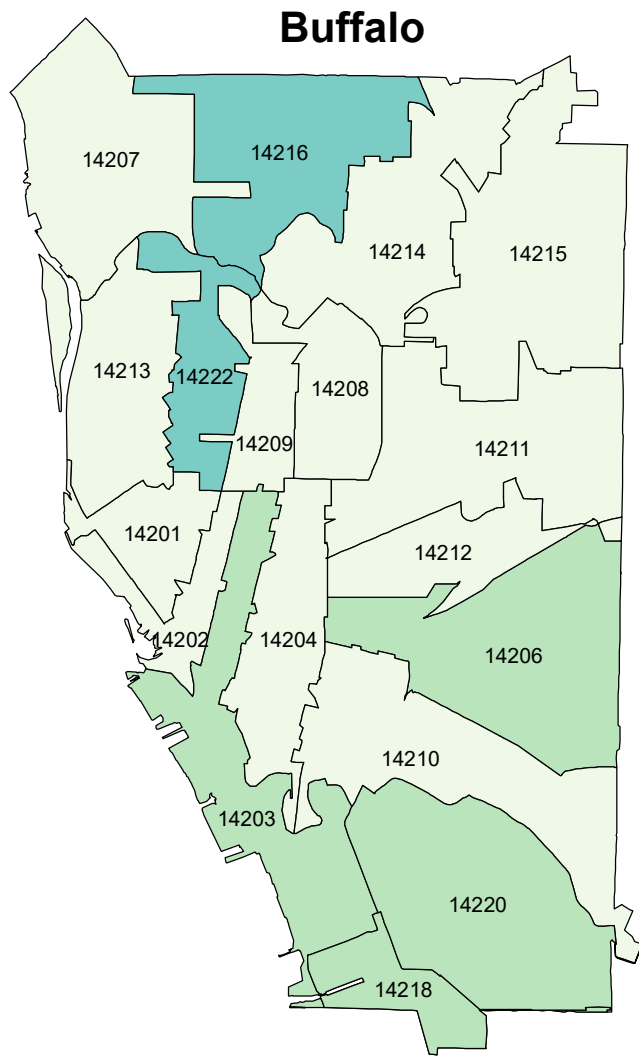
# Percent Population Currently Employed Full Time [At Least 35 hrs/wk, 50 wks/yr] by ZIP Code



## Legend



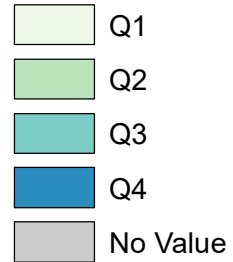
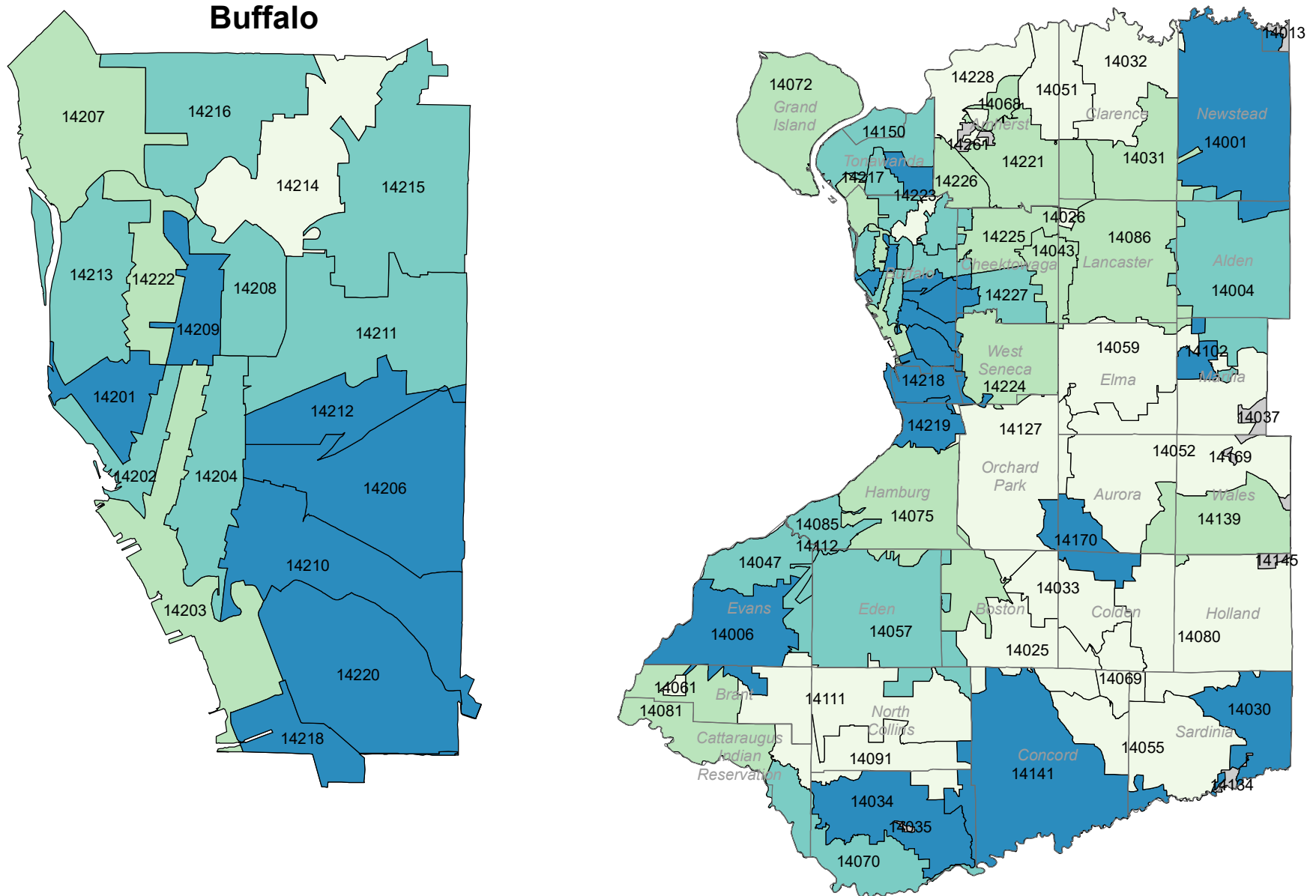
# Percent of Working Age Population Currently Employed [Ages 20-64] by ZIP Code



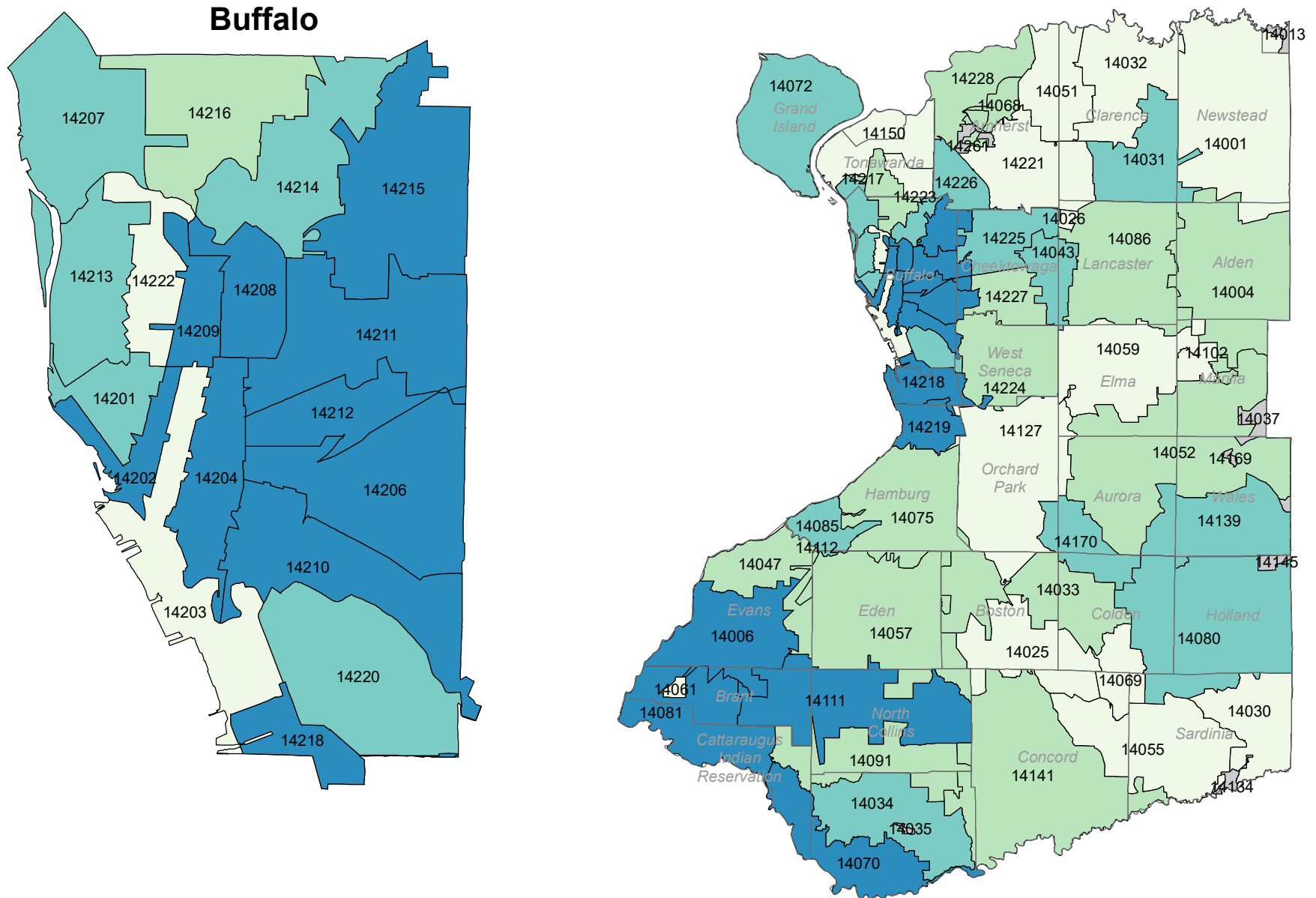




# Percent of Disabled Population Currently Employed [Any Disability] by ZIP Code



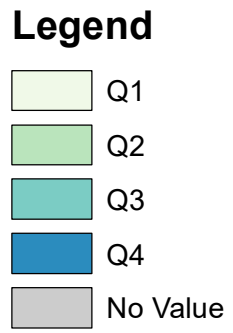
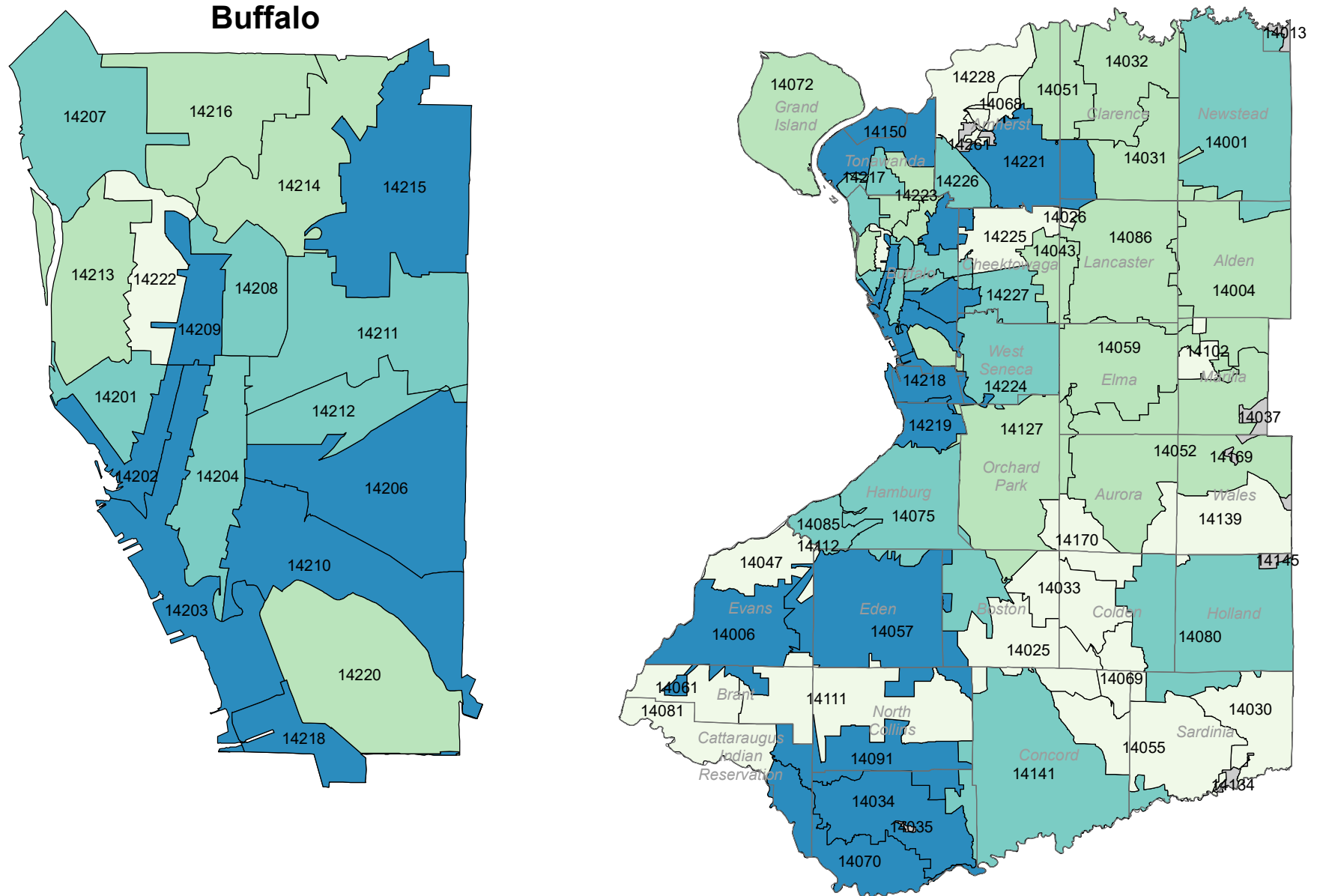
# Unemployment Rate among Work Age Population [Ages 20-64] by ZIP Code







# OASAS Treatment Program Admissions [Under Age 18] (per 10,000 population) by ZIP Code

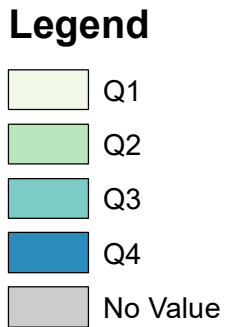
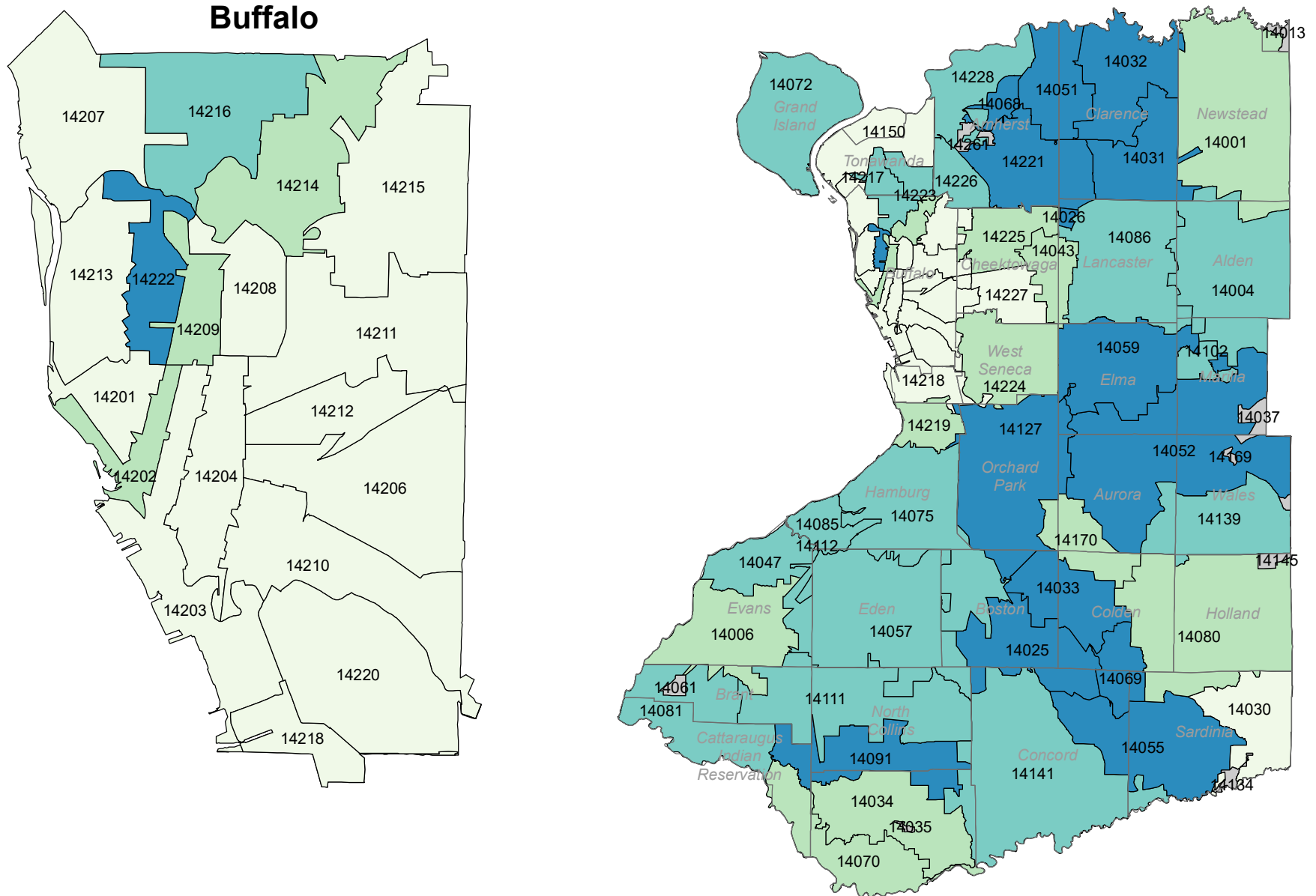




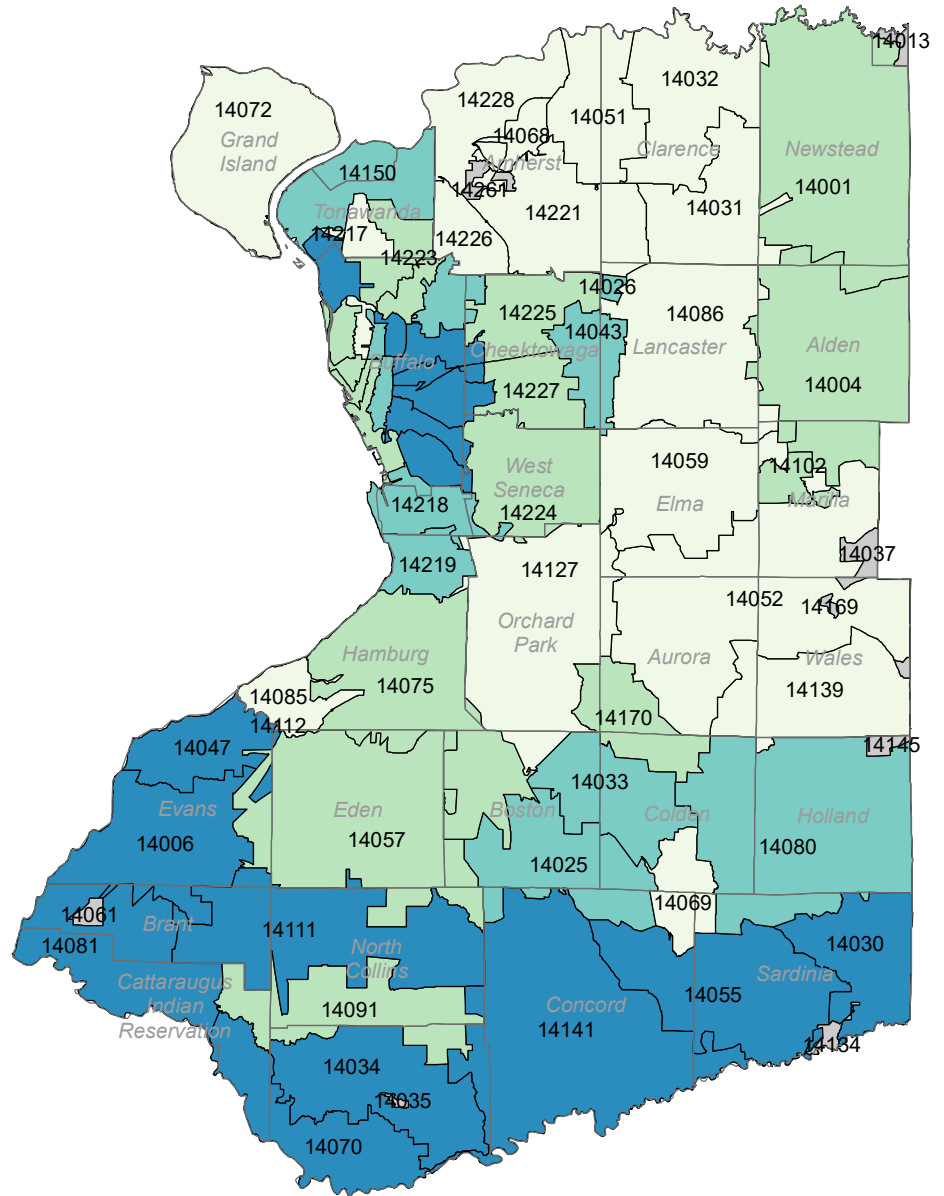
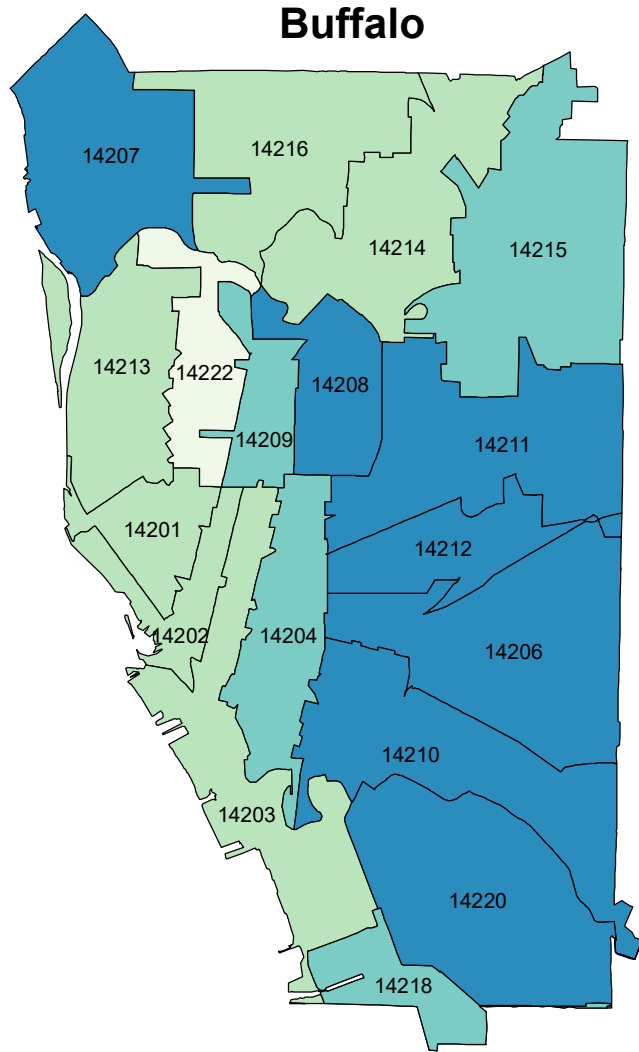




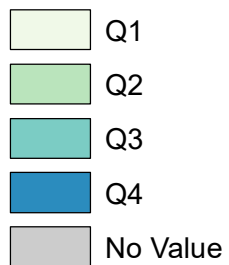
# Percent of Mothers Breastfeeding at Hospital Discharge by ZIP Code



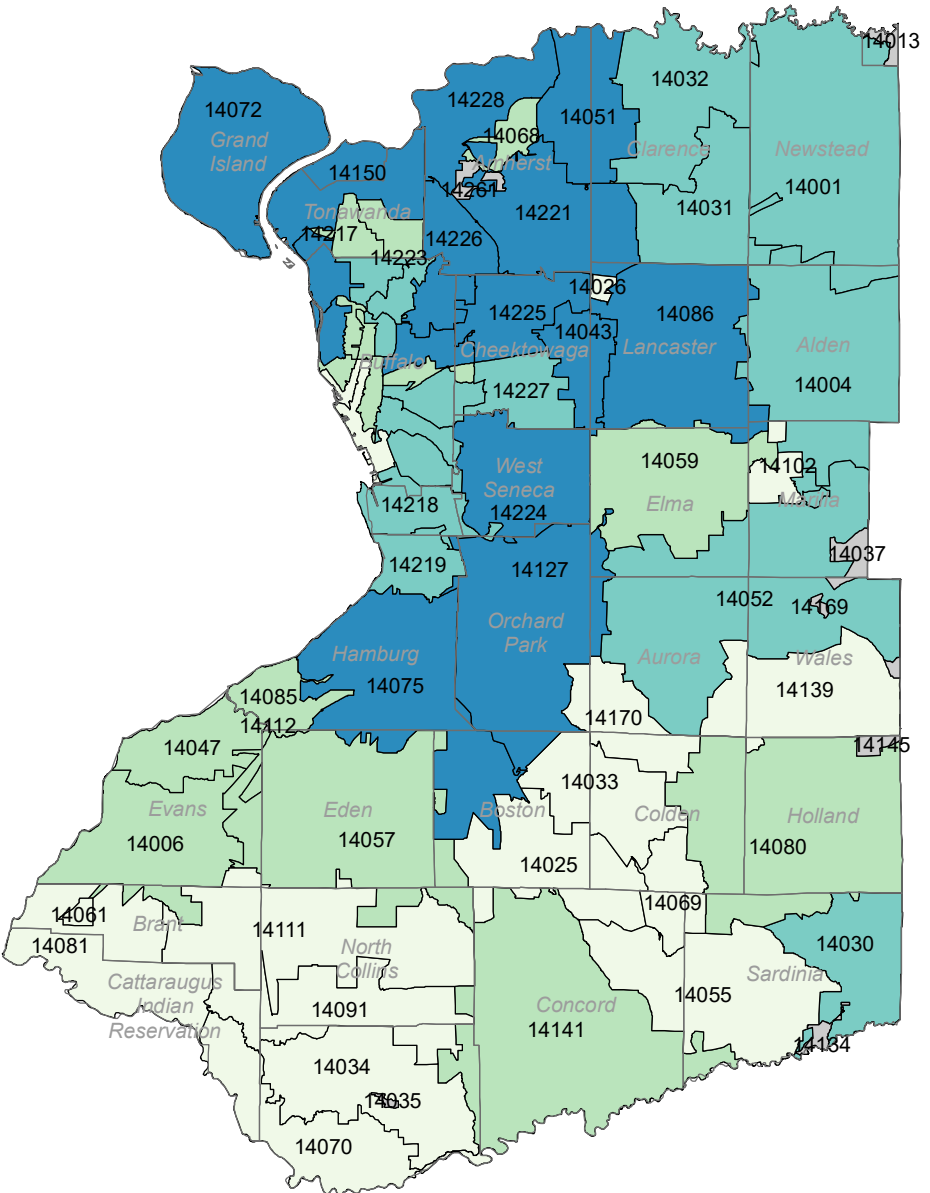
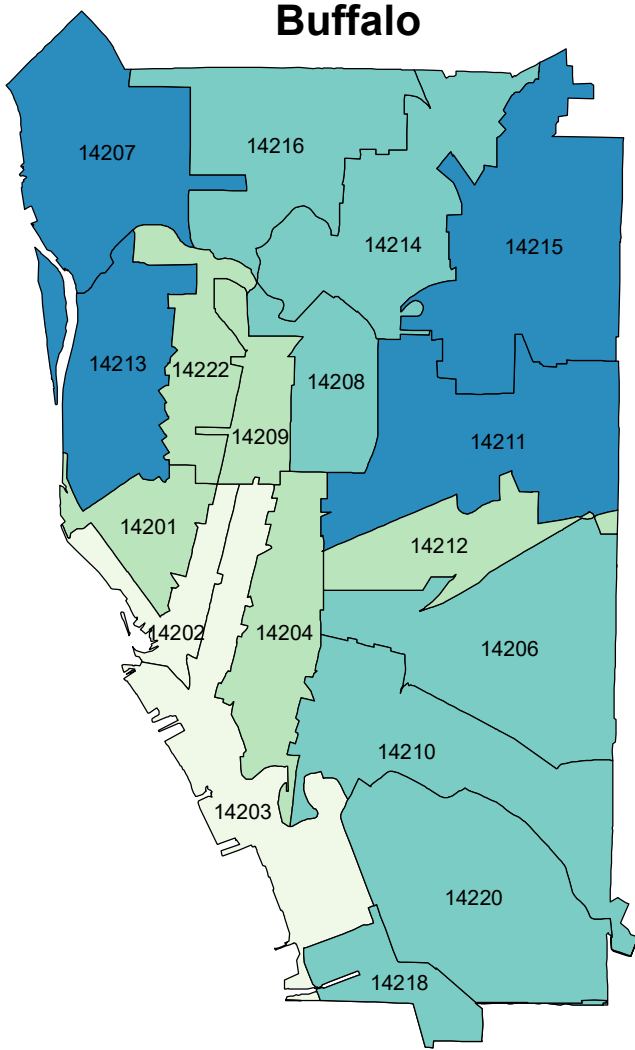
# Percent of Mothers Smoking During or up to 3 Months Prior to Pregnancy by ZIP Code



## Legend



# Annual School Attendance Rate by ZIP Code



# Annual School Suspension Rate by ZIP Code

## Buffalo

